



ABBREVIATIONS

- AC Map accompanies a report
BRM Funded under the Black River-Matthewson project
BT Minor bedrock topography / bedrock geology included
C Map is full colour
CN Funded and/or authored by, and also available from, the Geological Survey of Canada
COMDA Funded under the Canada-Ontario 1985 Mineral Development Agreement
DAI Funded under the Discover Abitibi Initiative
KLIIP Funded under the Kirkland Lake Initiatives Program
M Map is monochrome (black and white / red and white)
MD Minor mineral deposit data included
MI Includes marginal notes
MRD Miscellaneous Release—Data
NODA Funded under the Northern Ontario Development Agreement
OFR Open File Report
PZ Minor Paleozoic geology included
TA Map depicts 2 or more areas and/or insets; the scale given is that of the area most prominently displayed cartographically

Table with columns: OFM Series, Map No., Scale, Year, Description, Related Publication(s), Notes. Lists maps like OFM 163, OFM 183, OFM 184, etc.

Table with columns: P Series, Map No., Scale, Year, Description, Related Publication(s), Notes. Lists maps like P 3102, P 3200, P 3201, etc.

Table with columns: 2000 Series, Map No., Scale, Year, Description, Related Publication(s), Notes. Lists maps like 2223, 2519, 2520, etc.

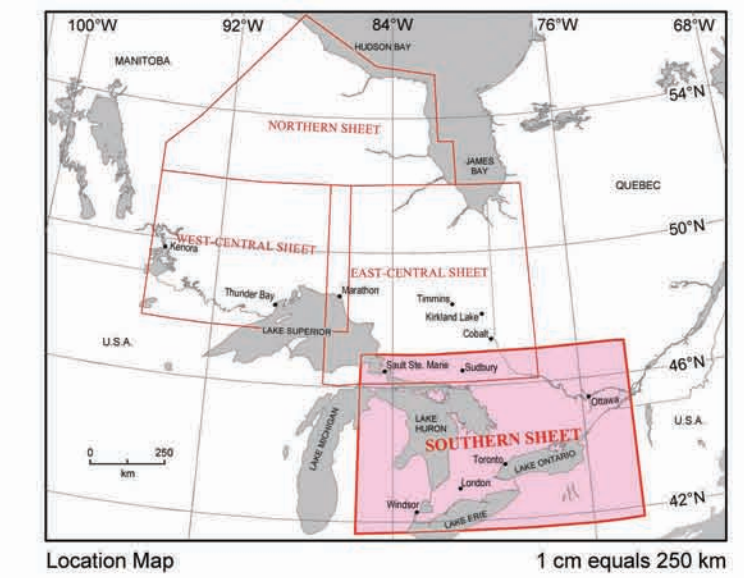
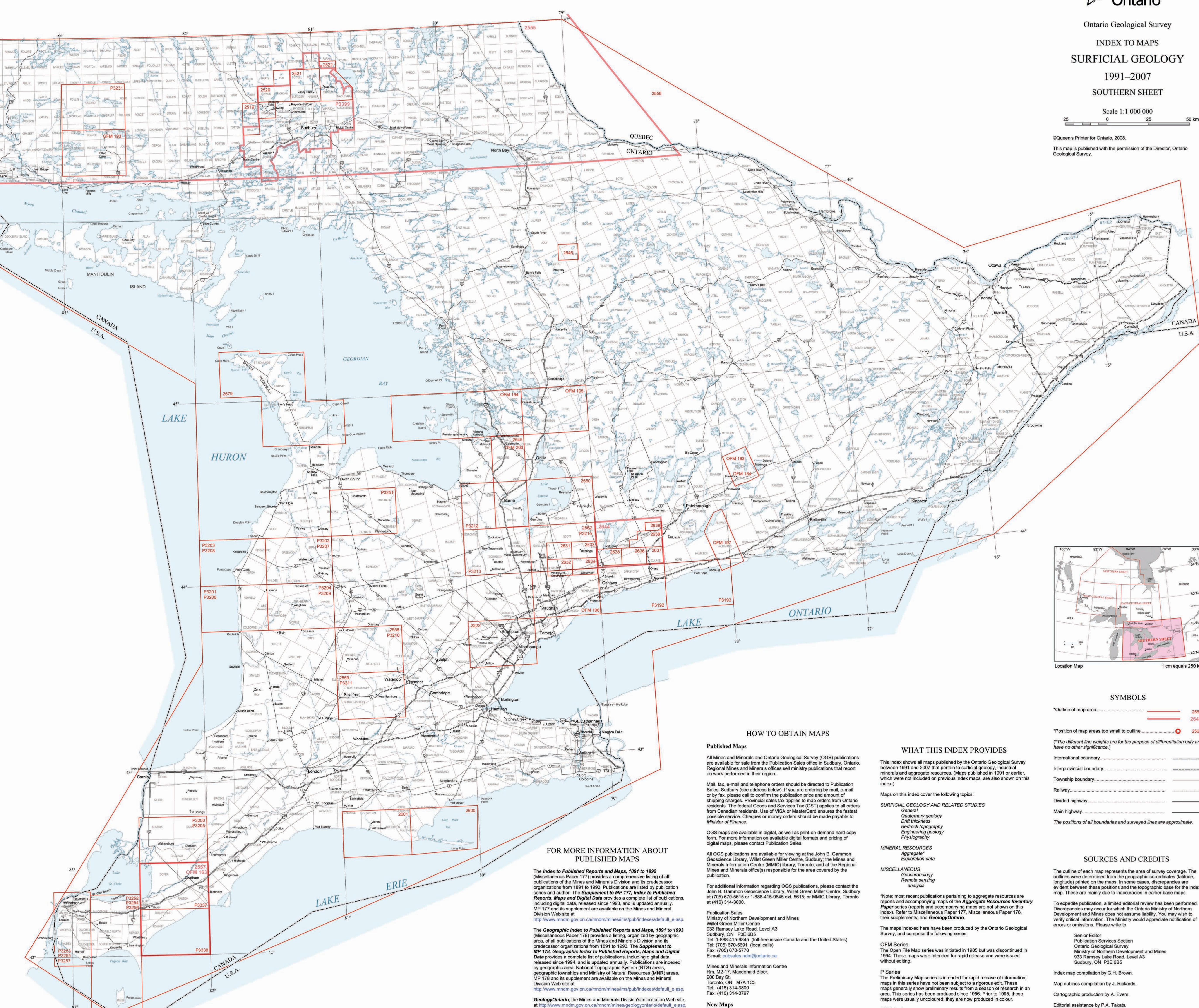


Table with columns: SYMBOLS, Description, Map No. Includes symbols for outline of map area, position of map areas, international boundary, etc.

HOW TO OBTAIN MAPS

Published Maps: All Mines and Minerals and Ontario Geological Survey (OGS) publications are available for sale from the Publication Sales office in Sudbury, Ontario. Regional Mines and Minerals offices sell ministry publications that report on work performed in their region.

FOR MORE INFORMATION ABOUT PUBLISHED MAPS

The Index to Published Reports and Maps, 1891 to 1992 (Miscellaneous Paper 177) provides a comprehensive listing of all publications of the Mines and Minerals Division and its predecessor organizations from 1891 to 1992. Publications are listed by publication series and author. The Supplement to MP 177, Index to Published Reports, Maps and Digital Data provides a complete list of publications, including digital data, released since 1993, and is updated annually.

WHAT THIS INDEX PROVIDES

This index shows all maps published by the Ontario Geological Survey between 1991 and 2007 that pertain to surficial geology, industrial minerals and aggregate resources. (Maps published in 1991 or earlier, which were not included on previous index maps, are also shown on this index.)

SOURCES AND CREDITS

The outline of each map represents the area of survey coverage. The outlines were determined from the geographic co-ordinates (latitude, longitude) printed on the maps. In some cases, discrepancies are evident between these positions and the topographic base for the index map. These are mainly due to inaccuracies in earlier base maps.