

# Process for Geocoding in QGIS

## *Using Google and OpenStreetMap Web Map Services*

Geocoding is the process of getting the corresponding coordinates for a list of addresses.

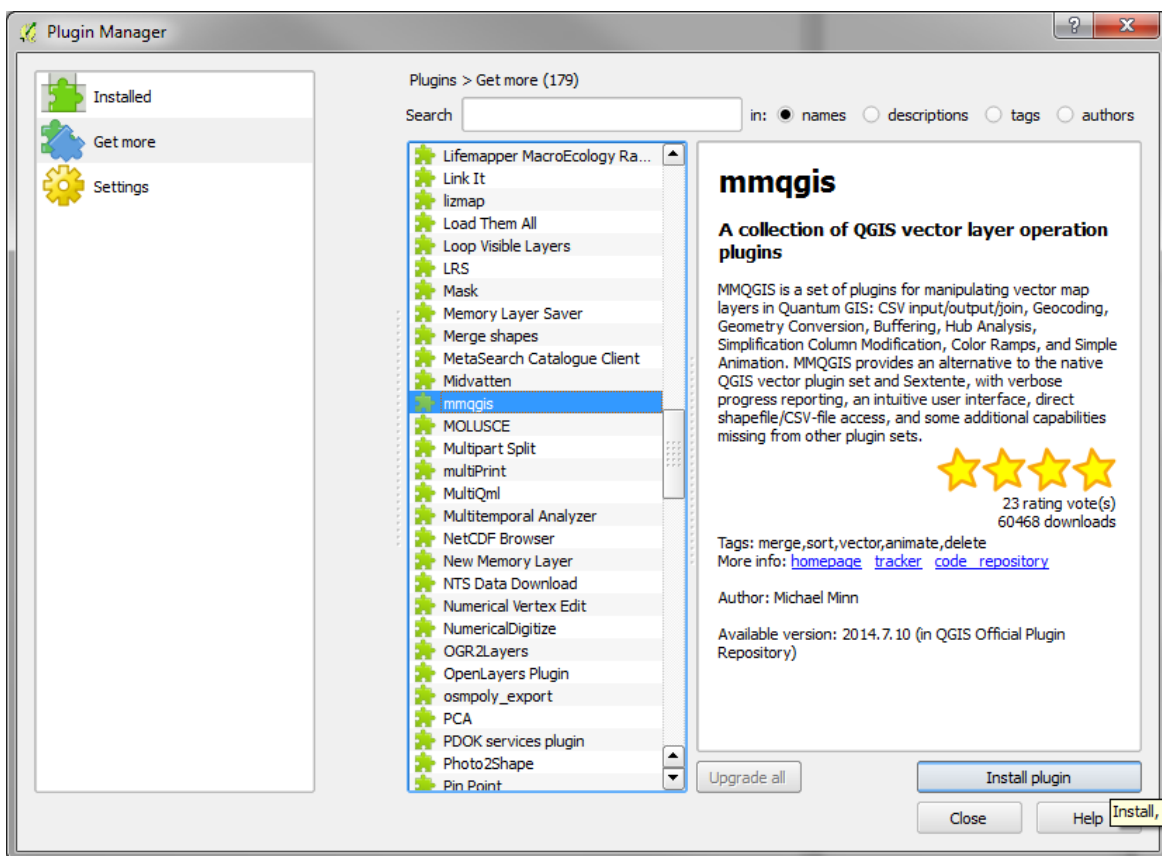
### 1 INSTALL MMQGIS PLUGIN

---

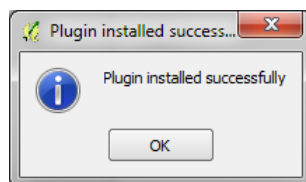
See the [QGIS User Manual](#) for more information on managing plugins.

Open the Plugin Manager – *Plugins -> Install and Manage Plugins*.

Select *Get More* in the left panel and look for “*mmqgis*” in the list of available plugins.



Click *Install plugin*. You will get a success message and a new MMQGIS item will be added to the menu.



## 2 PROCEDURE

---

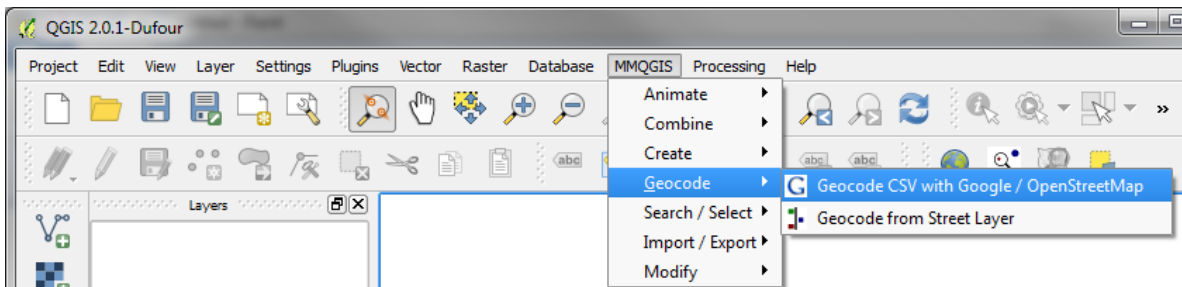
### 2.1 PRE-PROCESSING

Data must be in CSV (Comma-separated Values also known as Comma-delimited) format.

If your data is stored in an Excel spreadsheet, convert it to CSV – *File -> Save As -> CSV (Comma-delimited) under "Save as Type"*.

### 2.2 GEOCODING USING GOOGLE MAPS

MMQGIS -> *Geocode -> Geocode CSV with Google/OpenStreetMap*

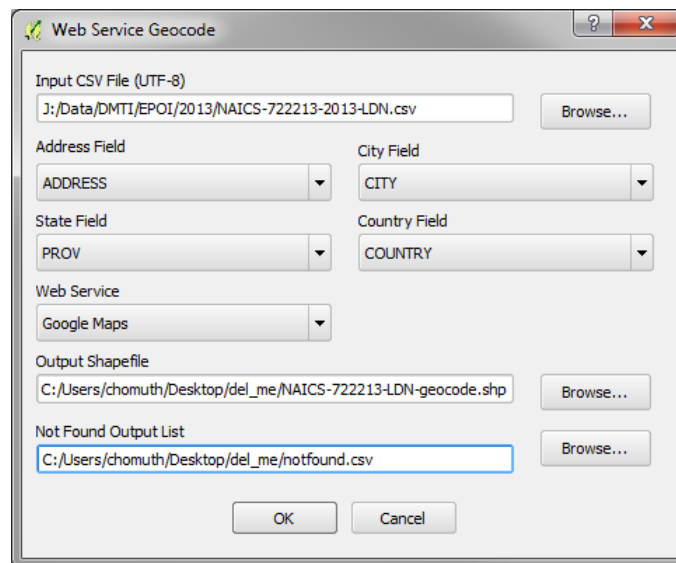


Navigate to your file using the *Browse* button.

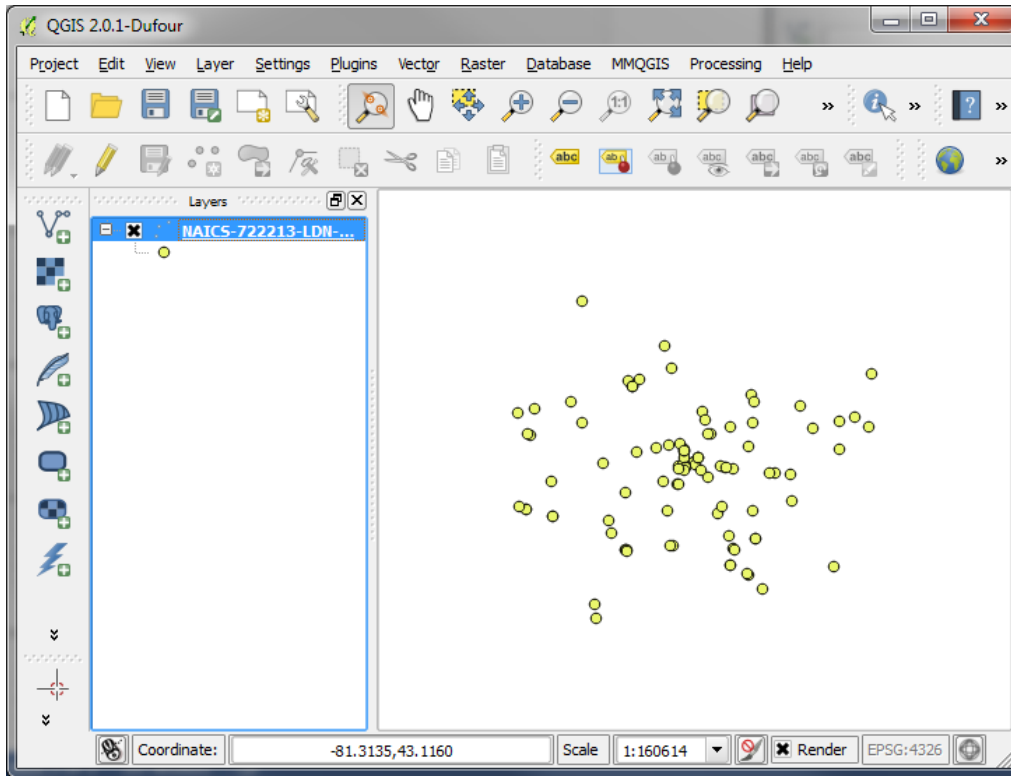
Ensure the *Output Shapefile* and *Not Found Output List* locations have write privileges. The *Not Found Output List* will produce a CSV file of locations that were not able to be geocoded.

Select *Google Maps* under *Web Service*.

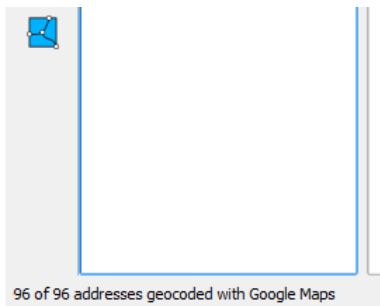
Click *OK*. Depending on the number of records, the processing may take a while.



Once the process is complete, the resulting shapefile will be added to your map display.

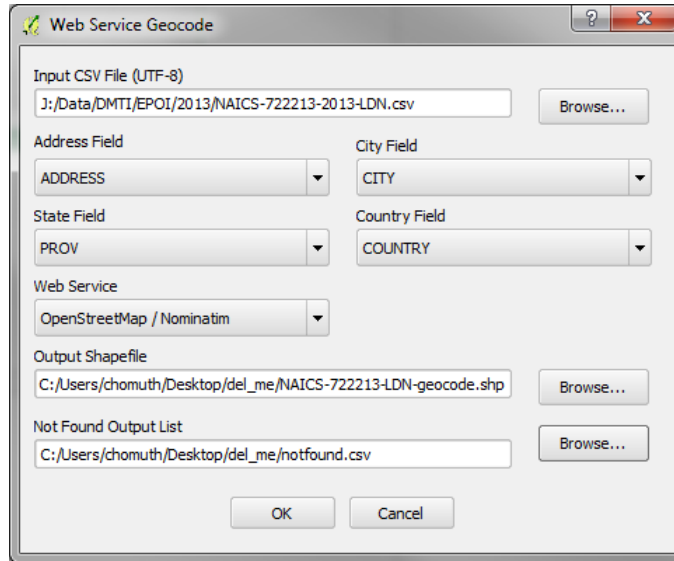


At the bottom left corner of the screen, there will be a status bar counting how many addresses have been geocoded during the process and the final count once completed.



### 2.3 GEOCODING USING OPENSTREETMAP

The process for using the OpenStreetMap web service is the same except *OpenStreetMap/Nominatim* is selected under *Web Service*.



At the bottom left corner of the screen, there will be a status bar counting how many addresses have been geocoded during the process and the final count once completed.



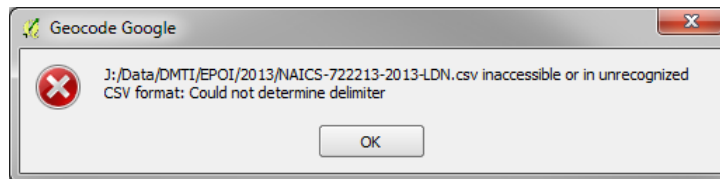
In this case, it was unable to locate 9 addresses which are listed in the *notfound.csv* file.

FID	POI_ID	NAME	UNIT_SUITE	ADDRESS	DELIV_MODE	CITY	MAF
12	POI4776613	TIM HORTONS		1751 DUNDAS E		LONDON	LON
14	POI5187608	TIM HORTONS		111 WHARNCLIFFE RD S		LONDON	Lond
24	POI4204223	HASBEANS		COVENT GARDEN MARKET		LONDON	LON
39	POI2767159	KATANA KAFE & GRILL		2530 BLAIR BLVD		LONDON	Lond
63	POI5667598	TIM HORTONS		841 WHARNCLIFFE RD S		LONDON	Lond
80	POI4204230	TIM HORTONS		LONDON GALLERIA MALL		LONDON	LON
83	POI4204227	TIM HORTONS		2094 DUNDAS E		LONDON	LON
86	POI4776218	INTERNATIONAL BAKERY CO		COVENT GARDEN MARKET		LONDON	LON
88	POI10198185	CATHY'S SUNRISE CAFE		7271 ARKONA RD ARKONA		LONDON	LON

### 3 TROUBLESHOOTING

---

If you receive the following error message when selecting your CSV file, open the file in Notepad and delete the blank line at the bottom if there is one. Also make sure your file does not already contain coordinates as geocoding would not be necessary.



### 4 SOURCES

---

How to Make a Web Map from a List of Addresses in a Spreadsheet – Mango Map Blog

<http://blog.mangomap.com/post/74368997570/how-to-make-a-web-map-from-a-list-of-addresses-in-a#>

QGIS User Manual

[http://docs.qgis.org/2.2/en/docs/user\\_manual/](http://docs.qgis.org/2.2/en/docs/user_manual/)